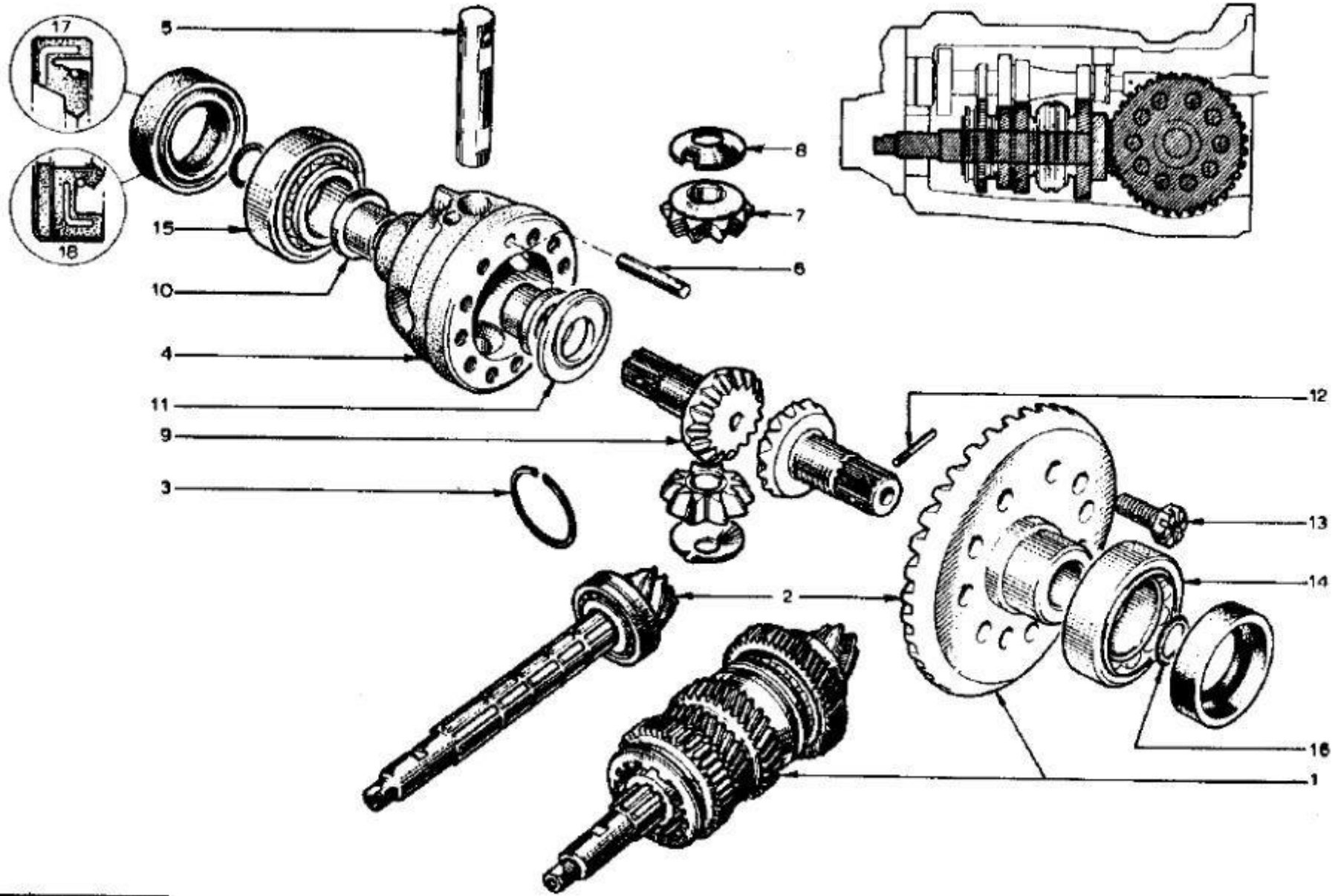


FM



Types 336 & 352

F 112

Lotus Europa TC/TCS Parts Manual - Section FM - Transmission - Crown Wheel and Pinion (336/352) - Page 2

Item	Lotus #	S1	S1A/B	S2	S2 Fed	TC	TC Fed	TCS	TCS F	LHD	RHD	Description	Change Point Notes Bulletin Reference
1	B046F6143W					1	1			+	+	Crown Wheel and Pinion with Gear Set (336 Gearbox)	
1	A074F6057W					1	1	1	1			Crown Wheel and Pinion with Gear Set (352 Gearbox)	
2	X046F6131Z					1	1			+	+	Crown Wheel and Pinion (Yellow) (336 Gearbox)	
2	X046F6132Z					1	1			+	+	Crown Wheel and Pinion (Blue) (336 Gearbox)	
2	A074F6056Z					1	1	1	1			Crown Wheel and Pinion (Yellow) (352 Gearbox)	
2	A074F6055Z					1	1	1	1			Crown Wheel and Pinion (Blue) (352 Gearbox)	
3	X046F6129Z					1	1			+	+	Circlip	
4	A046F6192Z					1	1			+	+	Carrier - Crown Wheel	
5	C046F6193Z					1	1			+	+	Differential Pin (336 gearbox)	
5	A074F6058Z					1	1	1	1			Differential Pin (352 Gearbox)	
6	A046F6124Z					1	1	1	1			Roll Pin	
7	A046F6136Z					2	2	2	2			Planet Wheel	
8	X046F6135Z					2	2	2	2			Thrust Washer	
9	X046F6138Z					2	2	2	2			Sun Washer	
10	X046F6137Z					2	2	2	2			Bush	
11	X046F6144Z											Washer (1.97 to 2.00 mm) (As Required)	
11	X046F6145Z											Washer (2.03 to 2.07 mm) (As Required)	
12	X046F6188Z					2	2	2	2			Roll Pin	
13	X046S6194Z					10	10			+	+	Bolt - Crown Wheel Attaching (336 Gearbox)	
13	X046F6139Z					10	10	10	10			Bolt - Crown Wheel Attaching (352 Gearbox)	
14	X046F6142Z					1	1	1	1			Bearing	
15	X046F6126Z					1	1	1	1			Bearing	
16	X046F6140Z					2	2	2	2			O Ring	
17	X046F6141Z					2	2			+	+	Ring Seal (336 Gearbox)	
17	X046F6141Z					2	2			+	+	Ring Seal (336 Gearbox)	Replaces X046F6141Z
18	A074F6024Z					2	2	2	2			Ring Seal (352 Gearbox)	