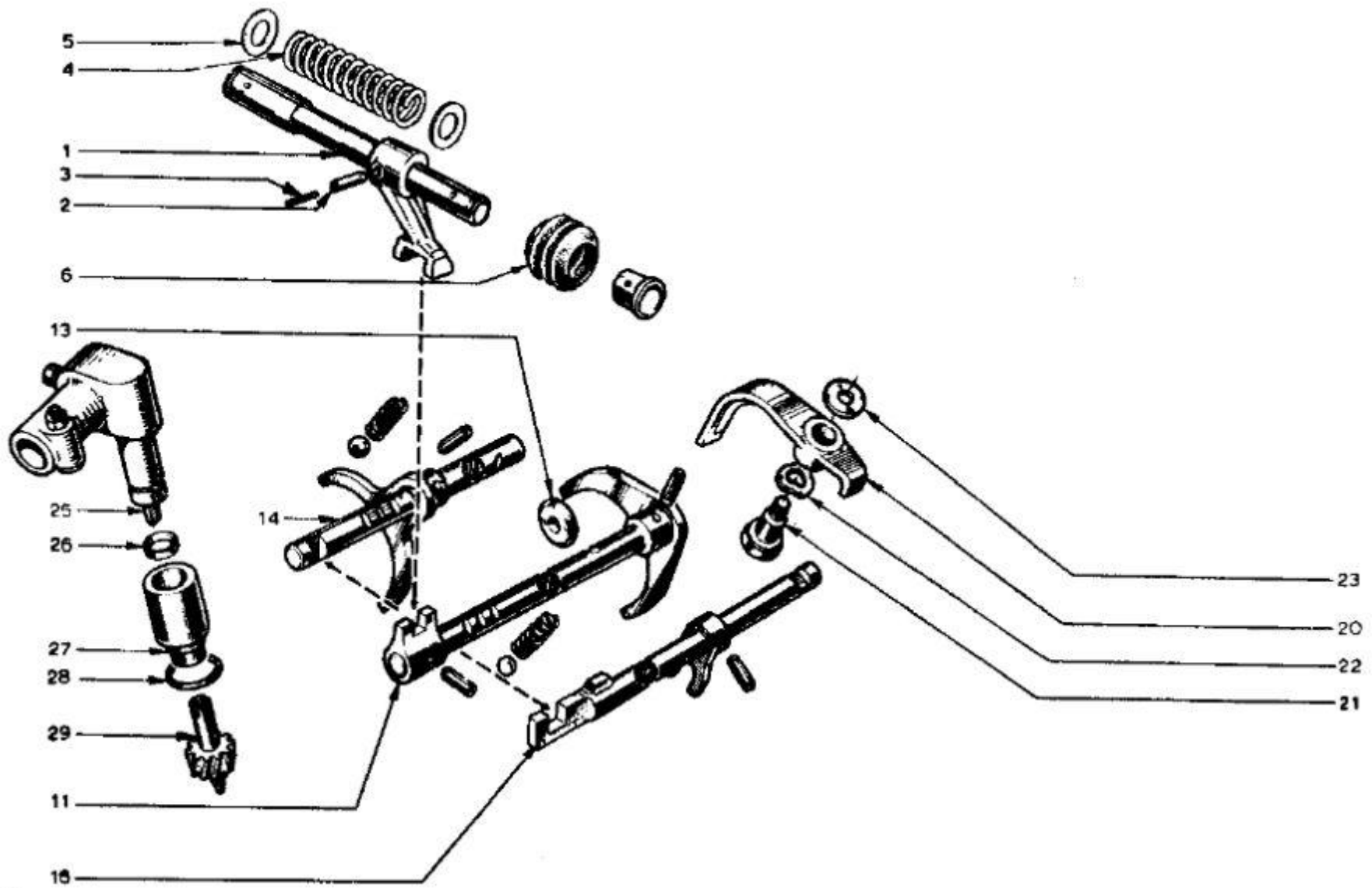


FJ



336

F110

Lotus Europa TC/TCS Parts Manual - Section FJ - Transmission - Shift Mechanism (336) - Page 2

Item	Lotus #	S1	S1A/B	S2	S2 Fed	TC	TC Fed	TCS	TCS F	LHD	RHD	Description	Change Point Notes Bulletin Reference
1	X054F6005Z					1	1			+	+	Cross Shaft	
2	A074F6004Z					1	1			+	+	Roll Pin - Outer	
3	X046F6097Z					1	1			+	+	Roll Pin - Inner	
4	A046F6049Z					1	1			+	+	Spring	
5	A046F6093Z					2	2			+	+	Washer	
6	X046F6092Z					2	2			+	+	Cap - Protective	
11	D046F6109Z					1	1			+	+	Selector Shaft with Fork 1st/2nd Gear	
11	X046F6110Z					1	1			+	+	Roll Pin - Fork Attaching - Selector Shaft with Fork 1st/2nd Gear	
11	A046F6030Z					1	1			+	+	Locking Ball - Selector Shaft with Fork 1st/2nd Gear	
11	A046F6101Z					1	1			+	+	Spring - Selector Shaft with Fork 1st/2nd Gear	
13	X046F6100Z					1	1			+	+	Locking Disc	
14	B046F6103Z					1	1			+	+	Selector Shaft with Fork 3rd/4th Gear	
14	X046F6099Z					1	1			+	+	roll Pin - Fork Attaching - Selector Shaft with Fork 3rd/4th Gear	
14	A046F6030Z					1	1			+	+	Locking Ball - Selector Shaft with Fork 3rd/4th Gear	
14	A046F6101Z					1	1			+	+	Spring - Selector Shaft with Fork 3rd/4th Gear	
16	X054F6006Z					1	1			+	+	Selector Shaft with Fork - Reverse Gear	
16	X046F6123Z					1	1			+	+	Roll Pin - Fork Attaching - Selector Shaft with Fork - Reverse Gear	
20	X046F6120Z					1	1			+	+	Selector Reverse Gear (Pivot hole dia 12mm)	
20	X074F6038Z					1	1			+	+	Selector Reverse Gear (Pivot hole dia 14mm)	
21	X046F6122Z					1	1			+	+	Pivot Bolt (Dia 12 mm)	
21	A074F6033Z					1	1			+	+	Pivot Bolt (Dia 14 mm)	
22	X046F6121Z					1	1			+	+	Washer (I/D 12 mm)	
22	A074F6034Z					1	1			+	+	Washer (I/D 14 mm)	
23	X046F6119Z					1	1			+	+	Spacer Washer	
25	X046F6104Z					1	1			+	+	Speedometer Angle Drive	
26	X046F6105Z					1	1			+	+	Ring Seal	
27	X046F6106Z					1	1			+	+	Speedometer Drive Gear Guide	
28	X046F6107Z					1	1			+	+	O Ring	
29	X046F6108Z					1	1			+	+	Speedometer Drive Gear	