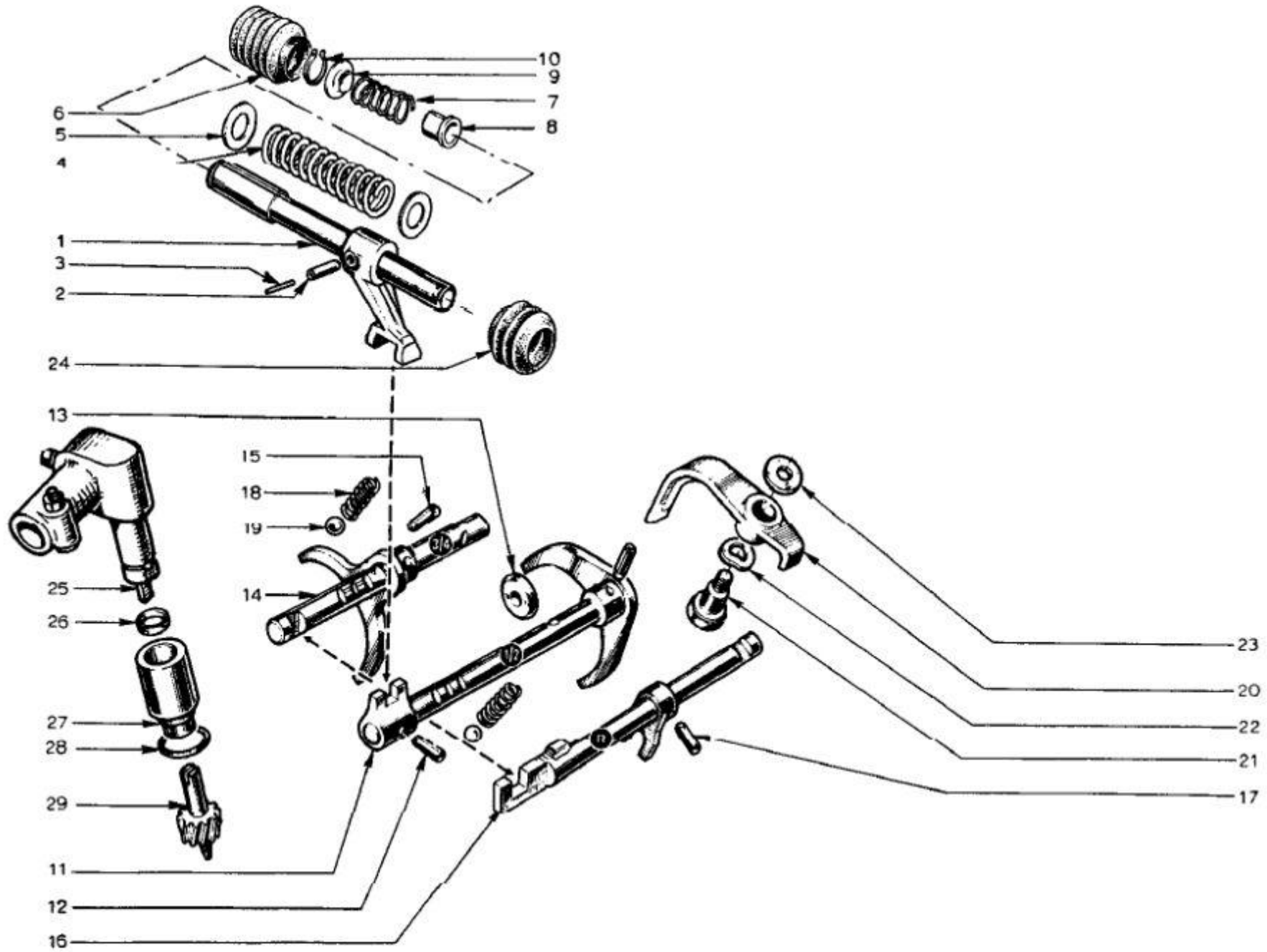


Lotus Europa S1/S2 Parts Manual - Section FE - Transmission - Shift Mechanism - Page 2

Item	Lotus #	S1	S1A/B	S2	S2 Fed	TC	TC Fed	TCS	TCS F	LHD	RHD	Description	Change Point Notes Bulletin Reference
1	046F6095	1	1	1	1							Cross Shaft (697-04)	Up To Engine No. 0319 excluding 0283 & 0304
1	054F6005	1	1	1	1							Cross Shaft (697-04)	From Engine No. 0320 including 0283 & 0304
2	046F6096	2	2	2	2							Tension Pin 7 x 25 mm - outer	Up to Engine No. ?
2	A046F6096	1	1	1	1							Tension Pin 7 x 25 mm - outer	From Engine No. ?
3	046F6097	2	2	2	2							Tension Pin 7 x 25 mm - inner	
4	046F6094	1	1	1	1							Spring (697-04)	Up To Engine No. 0319 excluding 0283 & 0304
4	A046F6094	1	1	1	1							Spring	From Engine No. 0320 including 0283 & 0304
5	046F6093	2	2	2	2							Washer (697-04)	Up To Engine No. 0319 excluding 0283 & 0304
5	A046F6093	1	1	1	1							Washer	From Engine No. 0320 including 0283 & 0304
6	046F6092	1	1	1	1							Rubber Boot	
7	A065F0726	1	1	1	1							Spring - Cross Shaft	From Engine No. ?
8	A046F6198	1	1	1	1							Cup - Spring	From Engine No. ?
9	A046F6199	1	1	1	1							Abutment - Spring	From Engine No. ?
10	046F6091	1	1	1	1							Circlip - Cross Shaft (697-04)	Up To Engine No. 0319
10	A046F6091	1	1	1	1							Circlip - Cross Shaft	From Engine No. 0320
11	A046F6109	1	1	1	1							Selector Shaft with fork 1st. & 2nd. Speed (Type 336-08)	
11	C046F6198	1	1	1	1							Selector Shaft with fork 1st. & 2nd. Speed (Type 336-46)	
11	D046F6109	1	1	1	1							Selector Shaft with fork 1st. & 2nd. Speed (Type 336-56)	
12	046F6110	1	1	1	1							Tension Pin 5 x 22 mm.	
13	046F6100	1	1	1	1							Disc	
14	046F6103	1	1	1	1							Selector Shaft with folk - 3rd. & 4th. Speed	Up to Engine No. 0319 excluding 0283 & 0304
14	A046F6109	1	1	1	1							Selector Shaft with folk - 3rd. & 4th. Speed (Type 336-46)	From Engine No. 0320
14	B046F6109	1	1	1	1							Selector Shaft with folk - 3rd. & 4th. Speed (Type 336-56)	From Engine No. 0320



Item	Lotus #	S1	S1A/B	S2	S2 Fed	TC	TC Fed	TCS	TCS F	LHD	RHD	Description	Change Point Notes Bulletin Reference
15	046F6099	2	2	2	2							Tension Pin 5 x 20 mm.	
16	046F6111	1	1	1	1							Selector Shaft with folk - reverse	Up to Engine No. 0319 excluding 0283 & 0304
16	054F6006	1	1	1	1							Selector Shaft with folk - reverse	From Engine No. 0319 including 0283 & 0304
16	054F6007	1	1	1	1							Selector Shaft with folk - reverse (Type 336-08 - 336-26 & 336-46)	
17	046F6123	1	1	1	1							Tension Pin	
18	046F6101	2	2	2	2							Spring - Selector Ball (Type 336-08 - 336-26 & 336-46)	
18	A046F6101	2	2	2	2							Spring - Selector Ball (Type 336-56)	
19	046F6030	2	2	2	2							Ball - 8 mm. Selector	
19	A046F6030	2	2	2	2							Ball - 10 mm. Selector	
20	046F6120	1	1	1	1							Selector Bracket	
21	046F6122	1	1	1	1							Bolt - Selector Fixing	
22	046F6121	1	1	1	1							Washer - Selector Fixing	
23	046F6119	1	1	1	1							Spacer Washer - Selector Fixing	
24	046F6098	1	1	1	1							Rubber Boot	
25	046F6104	1	1	1	1							Speedometer Angle Drive	
26	046F6105	1	1	1	1							Speedometer Drive Seal Ring	
27	046F6106	1	1	1	1							Speedometer Drive Gear Guide	
28	046F6107	1	1	1	1							Speedometer Drive Gear Guide to Gearbox O Ring	
29	046F6108	1	1	1	1							Speedometer Drive Gear	