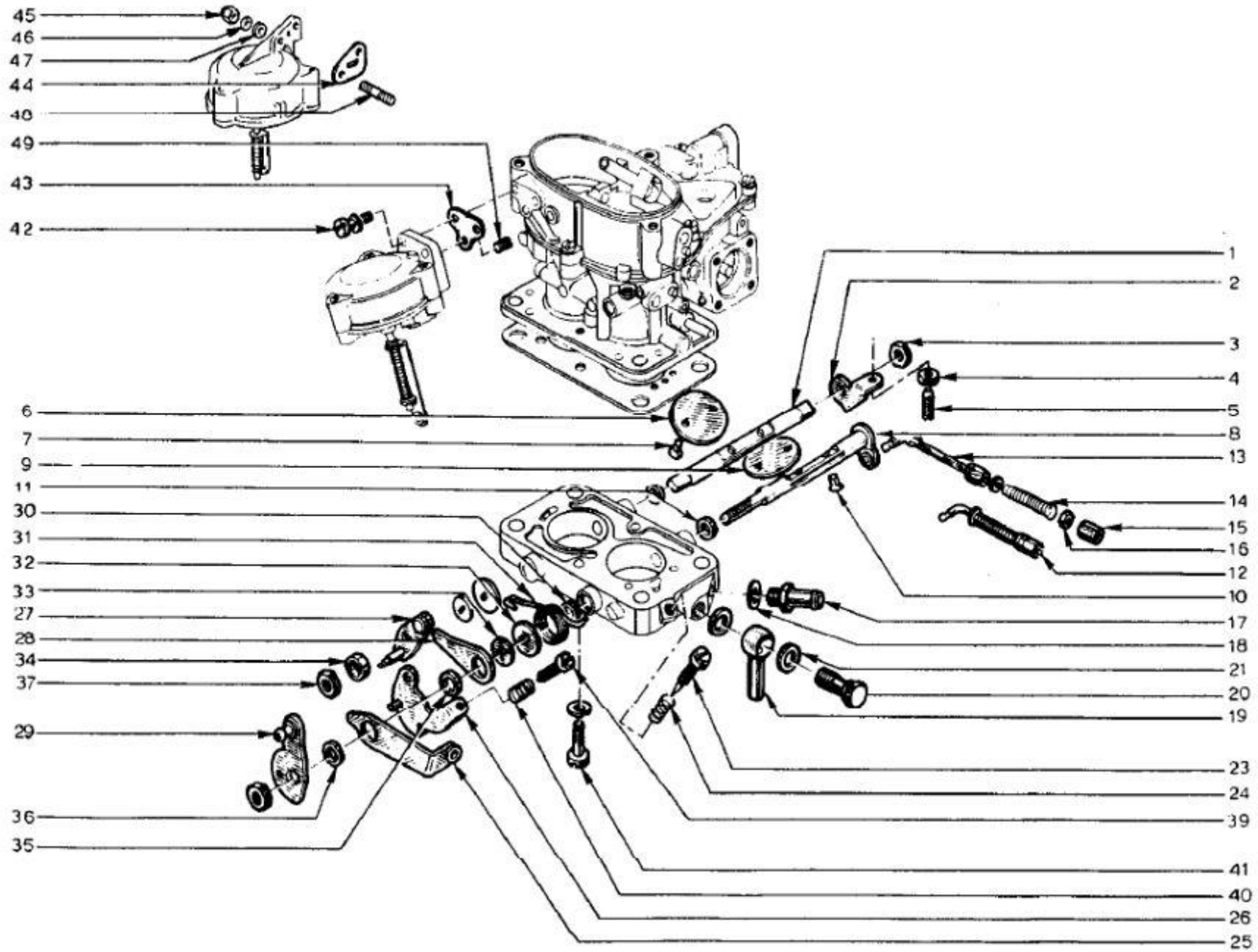
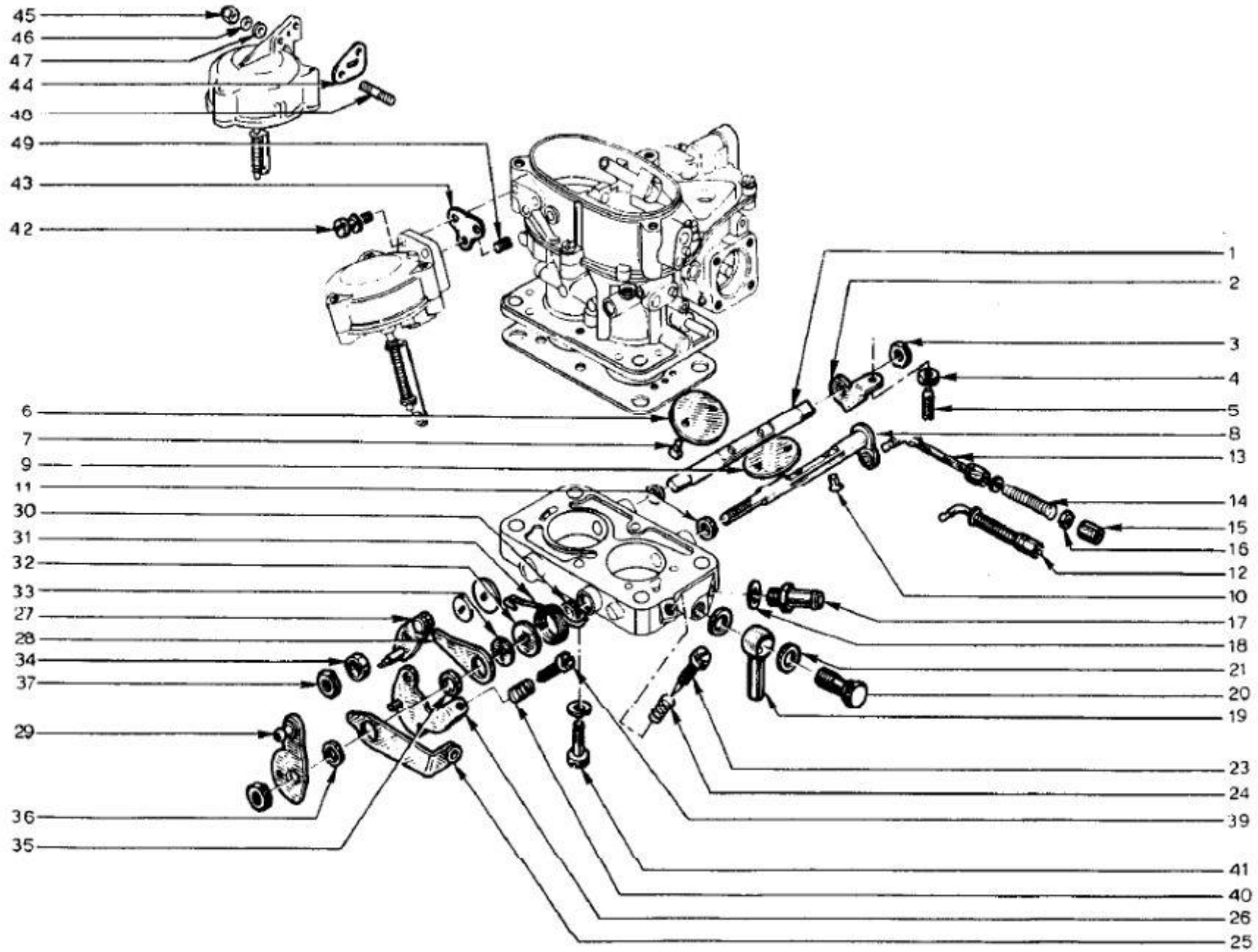


EK



Lotus Europa S1/S2 Parts Manual - Section EK - Engine - Carburetor Parts Section 2 - Page 2

| Item | Lotus # | S1 | S1A/B | S2 | S2 Fed | TC | TC Fed | TCS | TCS F | LHD | RHD | Description | Change Point Notes Bulletin Reference |
|------|-----------|----|-------|----|--------|----|--------|-----|-------|-----|-----|------------------------------------|--|
| 1 | 046E6245 | 1 | 1 | 1 | 1 | | | | | | | Shaft - Throttle valve | |
| 2 | 046E6246 | 1 | 1 | 1 | 1 | | | | | | | Stop Lever | |
| 3 | 046E6241 | 1 | 1 | 1 | 1 | | | | | | | Nut - Throttle Shaft | |
| 4 | 046E6247 | 1 | 1 | 1 | 1 | | | | | | | Lock Nut - Throttle Stop | |
| 5 | 046E6248 | 1 | 1 | 1 | 1 | | | | | | | Adjustment Screw - Throttle Stop | |
| 6 | 046E6232 | 1 | 1 | 1 | 1 | | | | | | | Throttle Valve | |
| 7 | 046E6233 | 2 | 2 | 2 | 2 | | | | | | | Screw | |
| 8 | 046E6249 | 1 | 1 | 1 | 1 | | | | | | | Shaft with lever - throttle valve | |
| 9 | 046E6232 | 1 | 1 | 1 | 1 | | | | | | | Throttle valve | |
| 10 | 046E6233 | 2 | 2 | | | | | | | | | Screw | Up to Eng. No. 0250 excluding 207 - 219 - 242 - 245 - 249 |
| 10 | 046E6410 | 2 | 2 | 2 | 2 | | | | | | | Screw | From Eng. No. 0251 including 207 - 219 - 242 - 245 - 249 |
| 11 | 046E6234 | 2 | 2 | 2 | 2 | | | | | | | Spacer bush | |
| 12 | 046E6254 | 1 | 1 | | | | | | | | | Link Assembly - Accelerator pump | Up to Eng. No. 0250 excluding 207 - 219 - 242 - 245 - 249 |
| 12 | 046E6409 | | 1 | 1 | 1 | | | | | | | Link Assembly - Accelerator pump | From Eng. No. 0251 including 207 - 219 - 242 - 245 - 249 |
| 13 | 046E6250 | 1 | 1 | | | | | | | | | Link - Accelerator pump | Up to Eng. No. 0250 excluding 207 - 219 - 242 - 245 - 249 |
| 13 | A046E6486 | 1 | 1 | 1 | 1 | | | | | | | Link - Accelerator pump | From Eng. No. 0251 including 207 - 219 - 242 - 245 - 249 |
| 14 | 046E6251 | 1 | 1 | 1 | 1 | | | | | | | Spring - Accelerator pump link | |
| 15 | 046E6252 | 2 | 2 | 2 | 2 | | | | | | | Nut - Accelerator pump link | |
| 16 | 046E6253 | 2 | 2 | 2 | 2 | | | | | | | Nut - Accelerator pump link | |
| 16 | A046W6028 | 1 | 1 | 1 | 1 | | | | | | | Washer - Accelerator Pump Link | |
| 17 | 046E6255 | 1 | 1 | 1 | 1 | | | | | | | Connection | |
| 18 | 046E6256 | 1 | 1 | 1 | 1 | | | | | | | Washer | |
| 19 | 046E6258 | 1 | 1 | 1 | 1 | | | | | | | Connector - banjo | |
| 20 | 046E6257 | 1 | 1 | 1 | 1 | | | | | | | Banjo Bolt | |
| 21 | 046E6256 | 2 | 2 | 2 | 2 | | | | | | | Washer | |
| 23 | 046E6259 | 1 | 1 | 1 | 1 | | | | | | | Idle Screw - Non-Emission | |
| 24 | 046E6260 | 1 | 1 | 1 | 1 | | | | | | | Spring - Idle Screw - Non_Emission | |
| 25 | 046E6264 | 1 | 1 | | | | | | | | | Lever - Choke Operating Link | Up to Eng. No. 0391 |



Lotus Europa S1/S2 Parts Manual - Section EK - Engine - Carburetor Parts Section 2 - Page 4

| Item | Lotus # | S1 | S1A/B | S2 | S2 Fed | TC | TC Fed | TCS | TCS F | LHD | RHD | Description | Change Point Notes Bulletin Reference |
|------|-----------|----|-------|----|--------|----|--------|-----|-------|-----|-----|---|--|
| 25 | 046E6408 | | 1 | 1 | 1 | | | | | | | Lever - Choke Operating Link | From Eng. No. 0392 |
| 26 | 046E6263 | 1 | 1 | 1 | 1 | | | | | | | Stop Lever - Idle Adjustment | |
| 27 | 046E6238 | 1 | 1 | 1 | 1 | | | | | | | Stop lever - Second Stage | |
| 28 | 046E6239 | 1 | 1 | 1 | 1 | | | | | | | Intermediate Lever | |
| 29 | 046E6242 | 1 | 1 | 1 | 1 | | | | | | | Lever - Throttle Control | |
| 30 | 046E6234 | 1 | 1 | 1 | 1 | | | | | | | Spacer Bush | |
| 31 | 046E6235 | 1 | 1 | 1 | 1 | | | | | | | Return Spring | |
| 32 | 046E6236 | 2 | 2 | 2 | 2 | | | | | | | Washer | |
| 33 | 046E6237 | 2 | 2 | 2 | 2 | | | | | | | Washer | |
| 34 | 046E6240 | 1 | 1 | 1 | 1 | | | | | | | Spacer Bush | |
| 35 | 046E6244 | 1 | 1 | 1 | 1 | | | | | | | Spacer Bush - 11 x 8 x 3 mm. | |
| 36 | 046E6243 | 1 | 1 | 1 | 1 | | | | | | | Spacer Bush - 10.9 x 18.1 x 2 mm. | |
| 37 | 046E6241 | 2 | 2 | 2 | 2 | | | | | | | Nut | |
| 39 | 046E6261 | 1 | 1 | 1 | 1 | | | | | | | Screw - Throttle Stop | |
| 40 | 046E6260 | 1 | 1 | 1 | 1 | | | | | | | Spring - Throttle Stop Screw | |
| 41 | 046E6262 | 2 | 2 | 2 | 2 | | | | | | | Screw - Throttle Block to Carburetter Body | |
| 41 | A046W6029 | 2 | 2 | 2 | 2 | | | | | | | Washer - Throttle Block to Carburetter Body | |
| 42 | 046E6174 | 2 | 2 | | | | | | | | | Screw - Vacuum Control to Cover | Up to Eng. No. 0250 excluding 207 - 219 - 242 - 245 - 249 |
| 43 | 046E6231 | 1 | 1 | 1 | | | | | | | | Carburetter Gasket - Vacuum Control to Cover (697-04) | |
| 44 | A054E6031 | | | | 1 | | | | | | | Carburetter Gasket - Vacuum Control to Cover (821-30) | |
| 45 | A046W6109 | 2 | 2 | 2 | 2 | | | | | | | Nut - Vacuum Control to Cover | From Eng. No. 0251 including 207 - 219 - 242 - 245 - 249 |
| 46 | A046W6027 | 2 | 2 | 2 | 2 | | | | | | | Spring Washer - Vacuum Control to Cover | From Eng. No. 0251 including 207 - 219 - 242 - 245 - 249 |
| 47 | A046W6111 | 2 | 2 | 2 | 2 | | | | | | | Washer - Vacuum Control to Cover | From Eng. No. 0251 including 207 - 219 - 242 - 245 - 249 |
| 48 | A046W6110 | 2 | 2 | 2 | 2 | | | | | | | Stud - Vacuum Control to Cover | From Eng. No. 0251 including 207 - 219 - 242 - 245 - 249 |
| 49 | 046E6197 | 1 | 1 | | | | | | | | | Jet - 80 | Up to Eng. No. 0250 excluding 207 - 219 - 242 - 245 - 249 |
| 49 | A046E6487 | 1 | 1 | 1 | 1 | | | | | | | Jet - 70 | From Eng. No. 0251 including 207 - 219 - 242 - 245 - 249 |